



Precision Laser and Fabrication Inc.

STRUCTURAL PROCESSING

- ✔ Reduce Production Labor Cost
- ✔ Reduce Production Downtime
- ✔ Improve Part Repeatability and Accuracy
- ✔ Increase Production Capability
- ✔ Help you fulfill more complex jobs
- ✔ Enable your business to handle more without increasing your workforce.



PRECISION LASER & FAB

3315 Miners Ave, Saskatoon, SK S7K 7K9



CALL US!!!

306-986-6789

✉ Sales@precisionlaserfab.com

🌐 www.precisionlaserfab.com



Structural steel solutions for ultimate performance

at  PLF

- Fanuc 6-Axis Robotic arm that can cut almost any structural shapes.
- Photo-Laser measuring device delivers accuracy.
- Hypertherm XPR Plasma for maximum efficiency and productivity for cutting.
- Complex Shapes: Capable of creating intricate designs that traditional machines cannot handle.
- Scribe marks for part identification and layout indicators adds efficiently, safety and compliance to your project



H-BEAM

FROM 2" X 2"
TO 40" X 16"



C-CHANNEL

FROM 4" X 2"
TO 40" X 5"



SQUARE

FROM 2" X 2"
TO 16" X 16"



RECT. HSS

FROM 2" X 2"
TO 40" X 16"



ANGLE

FROM 2" X 2"
TO 17" X 35"



U-CHANNEL

FROM 4" X 2"
TO 40" X 5"



FLAT BAR

FROM 2" X .375"
TO 40" X .375"



HSS ROUND

FROM 2"
TO 40" X 16"



I - BEAM

FROM 4" X 4"
TO 40" X 16"



T - BEAM

FROM 4" X 2"
TO 39" X 16"



BULB FLAT

FROM 2" TO 40"


PRECISION LASER & FAB

3315 Miners Ave, Saskatoon, SK S7K 7K9



CALL US!!!

306-986-6789

 Sales@precisionlaserfab.com

 www.precisionlaserfab.com



Laser cutting solutions designed for peak performance at

- Two 6KW lasers w/t 72" x 144" table.
- Tolerance +/- 0.005
- Offer scribing marks for part identification and layout indicators.
- Can process various metal such as Steel, Aluminum, Stainless, Copper and Brass.
- Ensure high quality result on every cut.

BEST QUALITY

The Alpha Lazer™ Fiber M-Series is a modular product family of state-of-the-art flying optics CNC laser cutting machines for the sheet metal industry.

ALPHA LAZER 6KW - 6' X 12'



MILD STEEL
UP TO 1"



ALUMINUM
UP TO .625"



STAINLESS STEEL
UP TO .500"



COPPER
UP TO .250"



PRECISION LASER & FAB

3315 Miners Ave, Saskatoon, SK S7K 7K9



CALL US!!!

306-986-6790



Sales@precisionlaserfab.com



www.precisionlaserfab.com

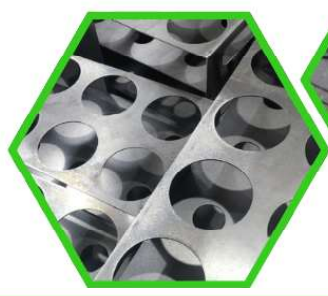




Precision Laser and Fabrication Inc.

FIBER LASER

- ✓ Deliver High-Quality Parts
- ✓ Excetional Service
- ✓ On-time Reliability
- ✓ Precision and Accuracy
- ✓ Consistent Tolerances
- ✓ Deburring Needed?



PRECISION REDEFINED: METAL PARTS CUT TO PERFECTION WITH EXCEPTIONAL ACCURACY

PRECISION LASER & FAB

3315 Miners Ave, Saskatoon, SK S7K 7K9



CALL US!!!


306-986-6790

✉ Sales@precisionlaserfab.com

🌐 www.precisionlaserfab.com





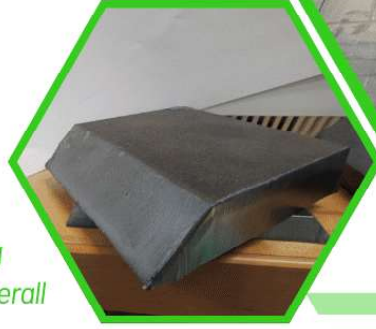
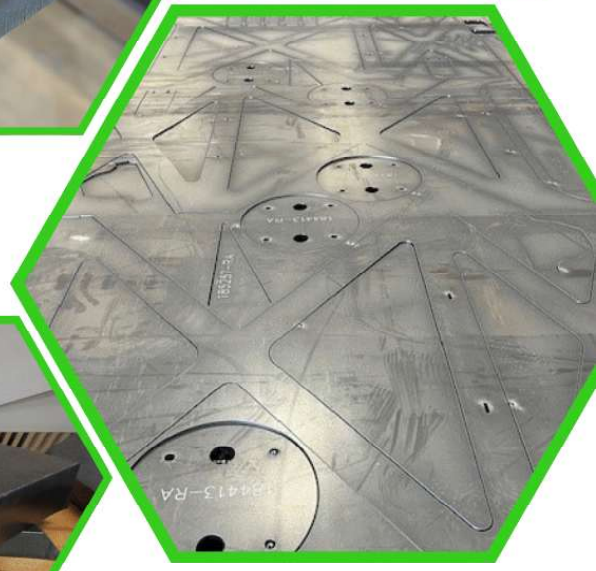
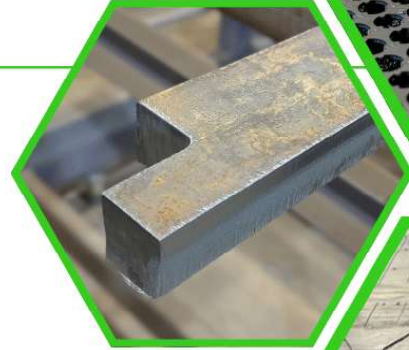
Plasma
cutting
solutions
engineered
for larger
scale projects
at 



Precision Laser and Fabrication Inc.

PLASMA/OXYFUEL

- ✔ Utilizing larger sheets and parts minimizes welds
- ✔ Thru Hole and Bevel Technology
- ✔ Versatility: Accommodates both large and small jobs
- ✔ Perfect for large scale projects



Utilizing larger sheets and parts minimizes welds, enhancing structural integrity, corrosion resistance, cost efficiency, and overall safety and aesthetics.

PRECISION LASER & FAB

3315 Miners Ave, Saskatoon, SK S7K 7K9



CALL US!!!

306-986-6789

 Sales@precisionlaserfab.com

 www.precisionlaserfab.com

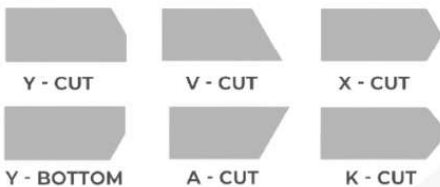


We have a huge selection of steel, aluminum & stainless inventory in stock

Duplex and Super Duplex Steels
Nickel Alloys (e.g., Inconel, Monel, Hastelloy)
Austenitic Steels (e.g., 304, 316)
Hardening Steels (e.g., 17-4 PH)
Nickel Alloys (e.g., Inconel, Monel, Hastelloy)
Titanium Copper and Brass

- Combination High-Definition Plasma and Oxy-Fuel Cutting.
- Large bed 10FT X 55FT.
- Offer scribing marks for part identification and layout indicators.
- Cutting Tolerances
 - Mild Steel
 - Tolerance: $\pm 0.010''$ to $\pm 0.020''$
 - Stainless Steel
 - Tolerance: $\pm 0.030''$ to $\pm 0.080''$
 - Aluminum
 - Tolerance: $\pm 0.040''$ to $\pm 0.08''$

BEVELING OPTIONS



SIZE MATTERS

CNC plasma systems are capable of producing high-quality beveled edges at the same time that they profile the plate.

Beveling and chamfering (along with other profiles) are applied to thicker pieces of metal prior to welding. The bevel provides a smooth clean edge to the plate or pipe and allows a weld of the correct shape (to prevent center-line cracking) to join the separate pieces of metal.



MILD STEEL
UP TO 12"



ALUMINUM
UP TO 2"



STAINLESS
UP TO 3"



PRECISION LASER & FAB

3315 Miners Ave, Saskatoon, SK S7K 7K9



CALL US!!!

306-986-6789



Sales@precisionlaserfab.com



www.precisionlaserfab.com





Precision Laser and Fabrication Inc.

PRESS BRAKES

- ✓ Accurpress 250 ton x 12'
- ✓ Trumpf 240 ton x 10'
- ✓ Steel, Aluminum, Stainless, Copper and Brass
- ✓ Need larger parts? We offer custom solutions beyond our brake's capacity



PRECISION REDEFINED: METAL PARTS CUT TO PERFECTION WITH EXCEPTIONAL ACCURACY

PRECISION LASER & FAB

3315 Miners Ave, Saskatoon, SK S7K 7K9



CALL US!!!

306-986-6790


✉ Sales@precisionlaserfab.com

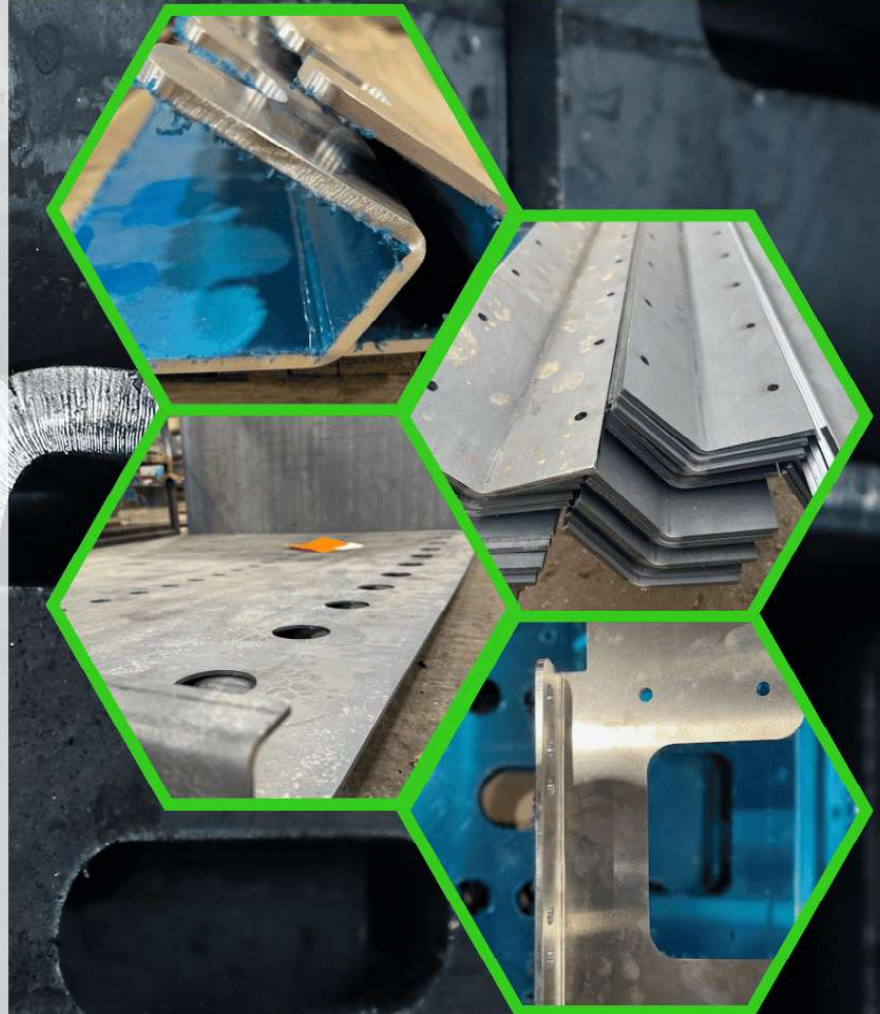
🌐 www.precisionlaserfab.com



Why Choose PLF

- **Unmatched Precision:**
Consistent bending accuracy for even the most challenging projects.
- **Short Lead Times:**
Operating 7 days a week to accommodate rush request
- **Comprehensive Solutions:**
From design to delivery, we ensure every detail meets your specifications.
- **Versatility in Fabrication:**
With capabilities to handle various materials, thicknesses, and part complexities
- **Commitment to Quality:**
Every project undergoes rigorous quality control
- **Industry Expertise:** Our skilled team ensures every project is delivered on time and to exact specifications.

Shaping
metal
components
flawlessly
at 



PRECISION LASER & FAB

3315 Miners Ave, Saskatoon, SK S7K 7K9



CALL US!!!

306-986-6790

 Sales@precisionlaserfab.com

 www.precisionlaserfab.com

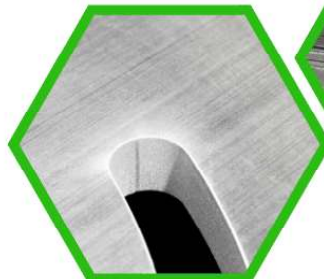




Precision Laser and Fabrication Inc.

CNC ROUTER

- ✔ 3-Axis CNC moving gantry on a large 96" x 240" bed
- ✔ Protect surface finish, smooth edge lines without heat distortion
- ✔ Can process large aluminum plates up to 3/4" thick 245" x 97" table capacity
- ✔ Can achieve tolerances as tight as +/- 0.005 inches for aluminum
- ✔ Achieves tight tolerances essential for aluminum components



PRECISION LASER & FAB

3315 Miners Ave, Saskatoon, SK S7K 7K9



CALL US!!!

306-986-6789



Sales@precisionlaserfab.com



www.precisionlaserfab.com

